



# Five Ways Effective Facilities Management Can Shape Student Success

By Shane Foster

[March / April 2025](#)

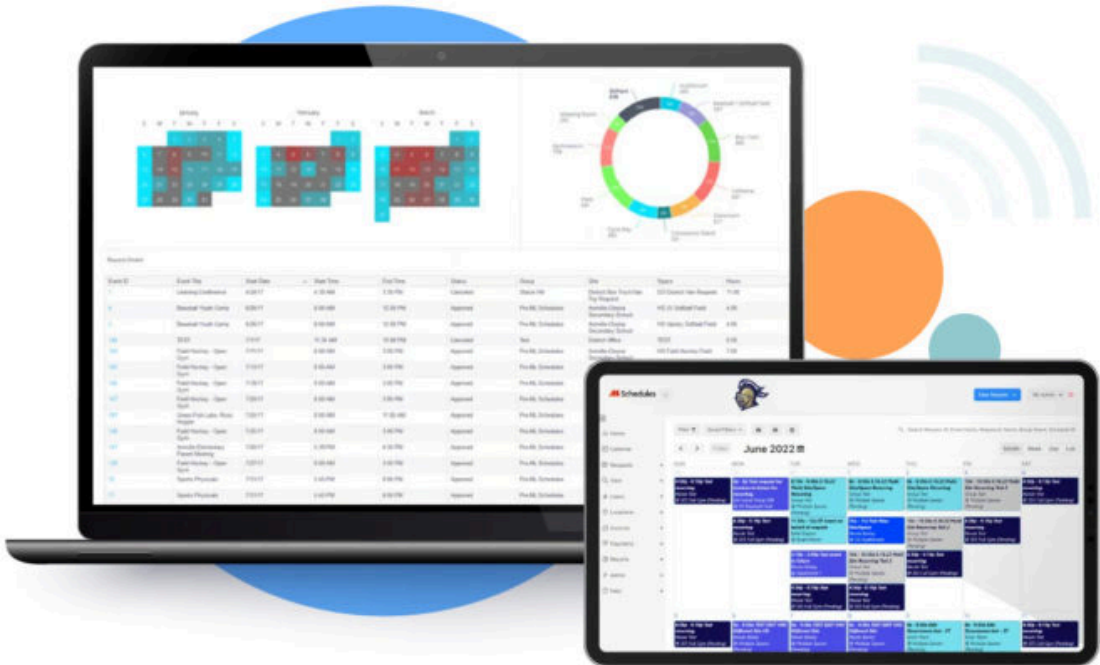
In school districts across the country, effective facilities management is often the unsung hero behind operational efficiency and educational excellence. Well-maintained schools not only provide a safe and conducive learning environment for students but also drive cost savings, improve energy efficiency, and extend the lifespan of critical infrastructure. When districts invest in proactive maintenance, strategic planning, and sustainable practices, they unlock long-term benefits that ripple through every corner of the system—ultimately allowing schools to focus on what truly matters: fostering student growth and achievement.

Here are five ways districts can maintain a smooth and efficient school environment, allowing them to focus more on student success:

## 1. Facilities Scheduling Software

Investing in advanced facilities scheduling software is a game-changer for school districts seeking to maximize efficiency and optimize resources. The right software can centralize and streamline the facility’s scheduling process, automate workflows, enhance communication, and facilitate seamless coordination across multiple district facilities, ultimately accommodating a broader range of student activities—from academic interventions and enrichment programs to extracurricular clubs and athletic events.

Leveling up your management platform can offer a wealth of time and cost-saving benefits, like intuitive scheduling that eliminates double bookings and the subsequent administrative



nightmares. Additionally, features like uploading and managing insurance files simplify event approval processes, freeing up staff to focus on student-centered priorities. With a clear snapshot of facility usage, schools can make data-driven decisions to allocate resources more effectively, ensuring that classrooms, athletic spaces, and extracurricular venues are optimized to support learning and enrichment opportunities for all students.

## 2. Preventative Maintenance

Preventative maintenance is the cornerstone of effective school district facilities management, offering immediate and long-term benefits. By addressing minor issues before they escalate into costly repairs or emergency shutdowns, districts can ensure uninterrupted learning environments that are safe and conducive to student success.

Additionally, using an asset management system to track equipment and infrastructure helps prioritize service and replacements for critical systems like HVAC, plumbing, electrical infrastructure, and roofs, ensuring classrooms are comfortable and functional year-round. Regular maintenance by experienced, licensed professionals extends the lifespan of equipment, reduces energy consumption, and fosters environments where students can focus on learning without distractions from facility issues. In a time of tightening budgets, preventative maintenance is necessary for sustainable school operations and a vital investment in daily well-being and academic performance.

## 3. Energy Efficiency

Energy efficiency is more than just an environmental initiative—it's a smart financial strategy that directly benefits districts and students by enhancing their learning environments. Upgrading to energy-efficient systems, such as LED lighting, high-performance HVAC units, and solar panels, reduces utility costs, freeing up valuable budget dollars for educational programs, teacher salaries, and student resources. These upgrades directly impact students by creating classrooms and recreational spaces that are consistently comfortable, well-lit, and conducive to focus and engagement.

Beyond infrastructure, engaging students and staff in energy-efficient initiatives fosters a sense of shared responsibility and equips the next generation with the tools to tackle environmental challenges beyond the classroom. Awareness campaigns and energy clubs can both educate and encourage students to play an active role in energy-saving strategies and environmental stewardship.

By embracing energy efficiency, districts demonstrate their commitment to sustainability and create healthier, more inspiring environments that support learning while cultivating a culture of responsibility and innovation.

## 4. Effective Use of Existing Space

By understanding classroom needs and embracing flexible-use designs, districts can significantly maximize facility efficiency and adapt to evolving demands. Multi-purpose spaces, modular furniture, and customizable layouts such as classrooms that double as collaborative hubs or gyms that transform into event venues allow schools to adapt to evolving needs, reducing the need for costly new construction.



Flexible layouts accommodate diverse learning styles, technology integration, special programs, and fluctuating enrollment, creating environments where students can thrive academically, socially, and creatively. These adaptable spaces foster collaboration, innovation, and engagement, supporting a variety of activities and teaching methods that cater to individual student needs.

Additionally, these spaces can serve the broader community, fostering partnerships and generating additional revenue through shared use. By reimagining how space is used, districts can create versatile, cost-effective environments that benefit students and communities alike, while ensuring resources are used to their fullest potential.

## 5. Think Long-Term



School districts that prioritize long-term strategy and planning for facilities management set the foundation for sustainable growth and academic success. Strategic budget planning allows districts to allocate funds thoughtfully, avoiding the pitfalls of deferred maintenance that lead to costly emergency repairs. Aligning upgrades with enrollment projections helps facilities meet future demand without unnecessary overbuilding or underutilization.

Additionally, facilities designed with academic goals in mind—such as flexible classrooms and collaborative spaces— can foster an environment of innovative teaching and learning.

*By adopting a forward-thinking plan, districts can create efficient, future-ready environments that prioritize both fiscal responsibility and educational goals.*

By adopting a forward-thinking plan, districts can create efficient, future-ready environments that prioritize both fiscal responsibility and educational goals.

A holistic approach to facilities management can transform how schools operate while directly enhancing the student experience. By leveraging smart software solutions, embracing energy efficiency, and prioritizing preventative maintenance, districts can optimize resources, reduce unnecessary costs, and ensure facilities are safe, functional, and inspiring for students. Additionally, maximizing existing spaces through flexible and innovative designs creates dynamic environments that adapt to diverse learning needs, foster collaboration, and support both financial sustainability and academic achievement.

Effective facilities management isn't just about maintaining buildings—it's about creating environments where students can reach their full potential and building futures for generations to come. When schools invest in these strategies, they build sustainable and efficient facilities and nurturing spaces that empower students to thrive academically, socially, and creatively.

---

**Shane Foster** is the Chief Product & Technology Officer at Follett Software. He can be reached at [sfoster@follettsoftware.com](mailto:sfoster@follettsoftware.com). This is his first article for Facilities Manager.

General Admin and Management

SHARE:

**FACILITIES**  
manager

**President & CEO**

Lalit Agarwal, [ceo@appa.org](mailto:ceo@appa.org)

**Magazine Content and Advertising**

APPA Staff, [publications@appa.org](mailto:publications@appa.org)

**Facilities Manager** (ISSN 0882-7249) is published quarterly. Send editorial submissions to [publications@appa.org](mailto:publications@appa.org).

Copyright © 2020-2025 by APPA. Contents may not be reprinted or reproduced in any form without written permission. The opinions expressed are those of the authors and do not necessarily reflect the views of APPA. Editorial mention of companies or products is for informational purposes only and should not be construed as an endorsement, actual or implied, by APPA.

## About APPA

*APPA cultivates community and contribution that drive results.*

Founded in 1914, APPA provides members the opportunity to explore trends, issues, and best practices in educational facilities through research, publications, professional development, and credentialing. Formerly the Association of Physical Plant Administrators, APPA is the association of choice for educational facilities professionals throughout the United States, Canada, and abroad. For more information, visit us at [www.appa.org](http://www.appa.org).

---

©2025 APPA. All rights reserved.

WordPress Web Design by **Materiell**